

Helping You

Keep Stormwater and

Our Lakes and Streams

Clean!

More information:

Syracuse Urban Area Stormwater Phase II
Program
<http://www.cnyrpdb.org/stormwater-phase2/>

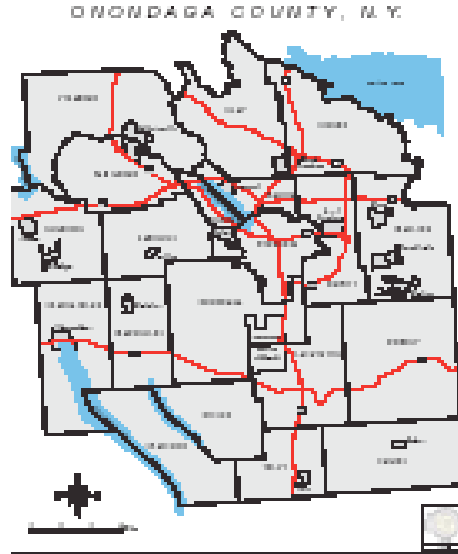
NYS Dept. of Environmental Conservation
Region 7 Office 315-426-7504
<http://www.dec.state.ny.us/website/dow/mainpage.htm>.

US Environmental Protection Agency
<http://www.epa.gov/npdes/>

Onondaga County Office of the Environment
315-435-2647
<http://www.ongov.net/Environment>

Cornell University Cooperative Extension:
Onondaga County
315-424-9485
www.cce.cornell.edu/onondaga

Onondaga County Resource Recovery Agency
315-453-2866
www.ocrra.org



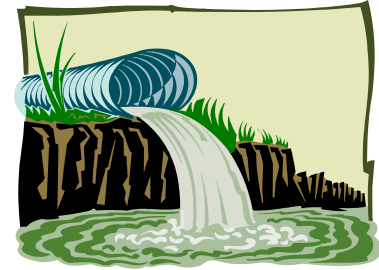
*This informative folder brought to you from
the Onondaga County
Council on Environmental Health*

Onondaga County Health Department

05/05

STOP POLLUTION

Before It Starts



Do Your Part

In Your Own Backyard!



Steps You Can Take

- ❑ **Cover piles of soil, sand or mulch. Plant grass or groundcovers where soil is exposed.**
- ❑ **Sweep and remove debris. Don't hose down sidewalks and driveways.**
- ❑ **Compost leaves and grass clippings or mow them back into the lawn.**
- ❑ **Divert roof water to lawns and gardens so it can soak into the ground.**
- ❑ **Keep unused pesticides and other pollutants off of streets and out of storm drains.**
- ❑ **Repair car and small engine leaks.**
- ❑ **Dispose of household hazardous wastes according to label directions. Look for the next OCCRA hazardous waste drop-off day!**
- ❑ **Dispose of pet wastes in the trash.**

What's Stormwater?



Stormwater is rain (or melting snow) that falls on hard or paved surfaces such as roofs, driveways, roads, and even some lawns.

As stormwater flows over these surfaces, it can pick up and carry contaminants such as:

- sediments
- litter and debris
- fertilizers, pesticides
- bacteria, other pathogens
- household hazardous wastes
- oil, grease, other automobile fluids

Where Stormwater Goes

Stormwater can run directly into nearby waters or be carried there by a system of pipes, culverts or ditches.

All stormwater systems lead to somewhere!

There's a New Word - MS4* and New Regulations for Municipalities

MS4 towns, villages, counties, and cities are required to improve the quality of stormwater carried through their system of pipes, culverts and ditches.

Stormwater control is required where construction work disturbs one acre or more of soil.

*MS4 = Municipal Separate Storm Sewer Systems

- No matter where you live, **you can** help protect the quality of nearby creeks, streams or lakes.

