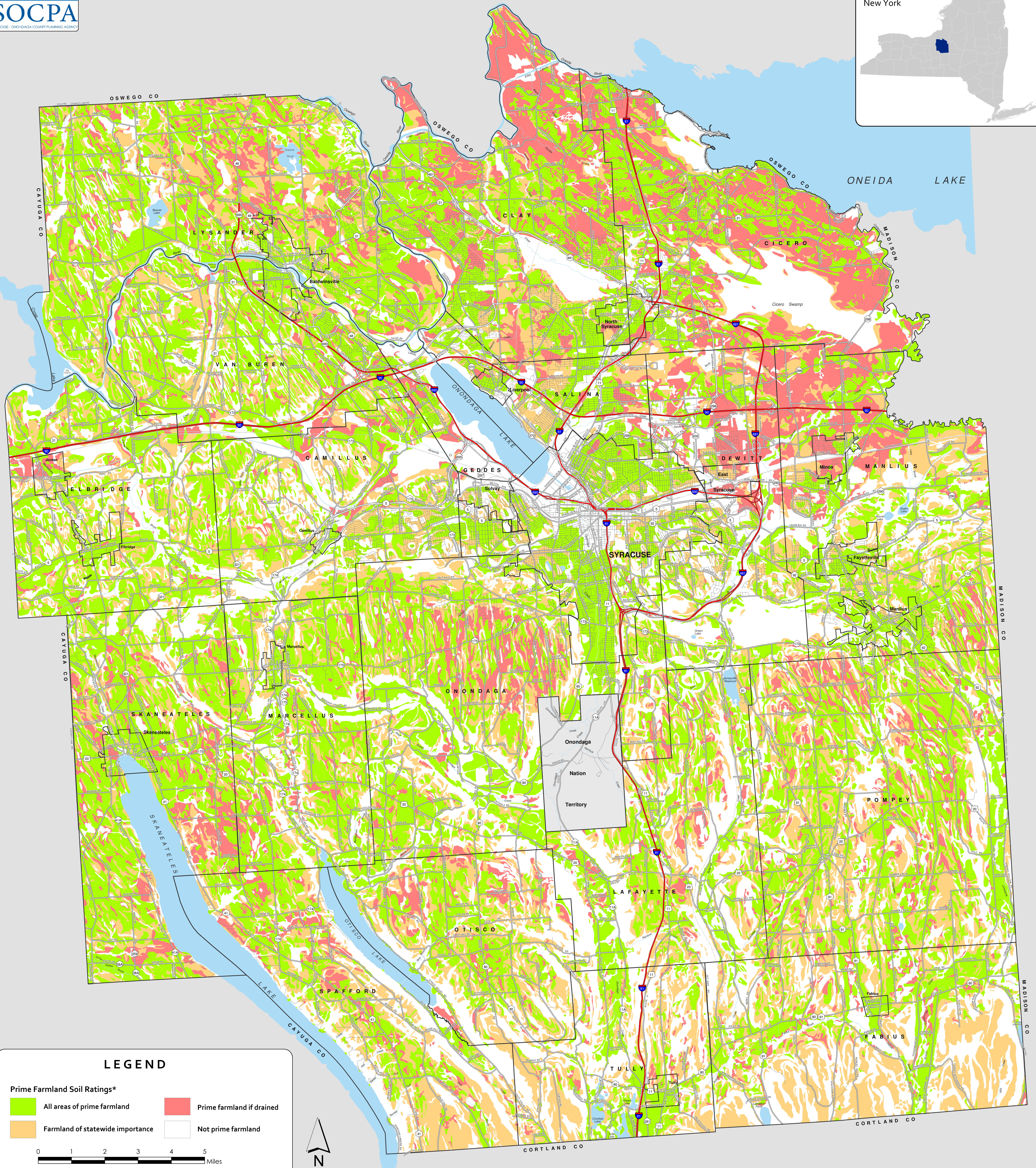
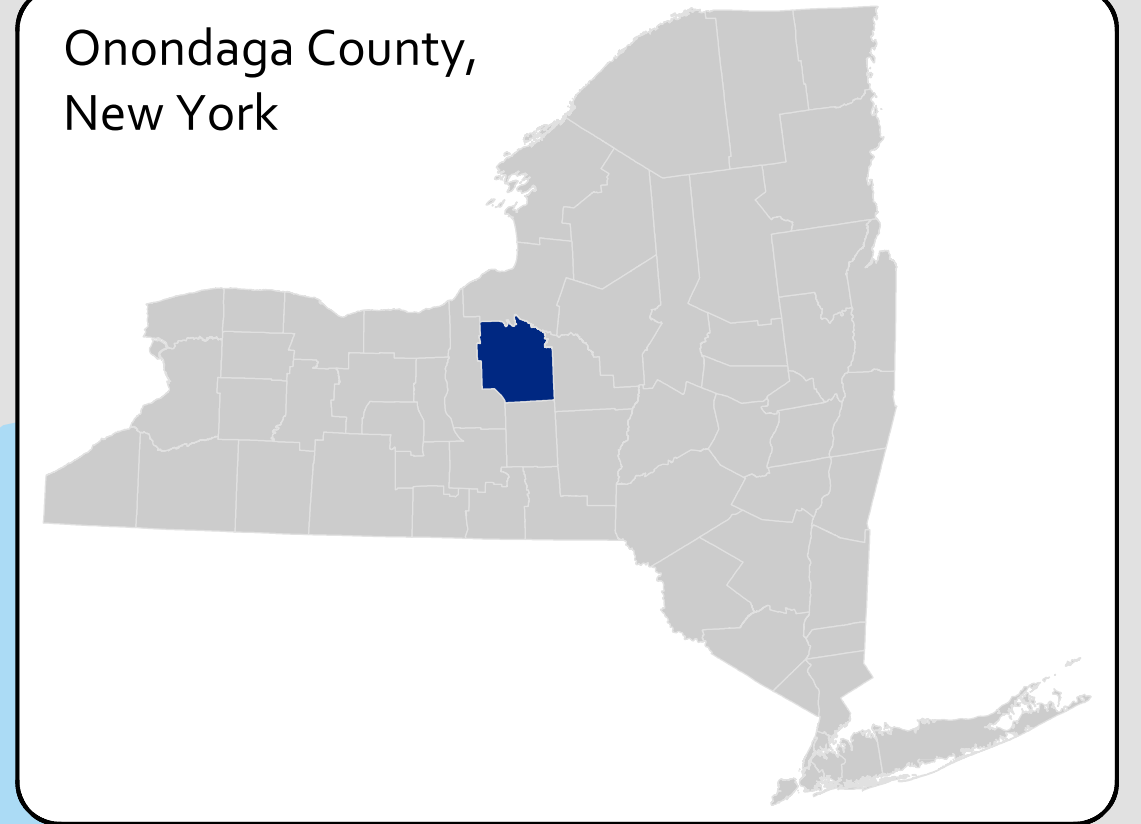






Prime Farmland Soils in Onondaga County



LEGEND

Prime Farmland Soil Ratings*

- | | |
|--|---|
|  All areas of prime farmland |  Prime farmland if drained |
|  Farmland of statewide importance |  Not prime farmland |



*Prime farmland ratings for soils were obtained from attributes included in the Soil Survey Geographic (SSURGO) database for Onondaga County (2016), and was produced by the U.S. Department of Agriculture. Areas inside the Onondaga Nation Territory are not included in the SSURGO system. See soil data source disclaimer in lower right hand corner of map.
December 2021

This map is intended for general planning purposes only, and should not be used to determine the suitability of a specific site for agricultural purposes. Please contact the Syracuse-Onondaga County Planning Agency or the Onondaga County Soil and Water Conservation District for more specific information on soils in Onondaga County.

Source Statement: This Soil Survey Geographic (SSURGO) data base was produced by the U.S. Department of Agriculture, Natural Resources Conservation Service and cooperating agencies for the Soil Survey of Onondaga County, New York. The soils were mapped at a scale of 1:12,000. Enlargement of these maps to scales greater than that at which they were originally mapped can cause misunderstanding of the detail of mapping. If enlarged, maps do not show the small areas of contrasting soil that could have been shown at a larger scale. The depicted soil boundaries and interpretations derived from them do not eliminate the need of onsite sampling, testing, and detailed study of specific sites for intensive uses. Thus, this map and its interpretations are intended for planning purposes only. Digital data files are periodically updated. Files are dated, and users are responsible for obtaining the latest version of the data.