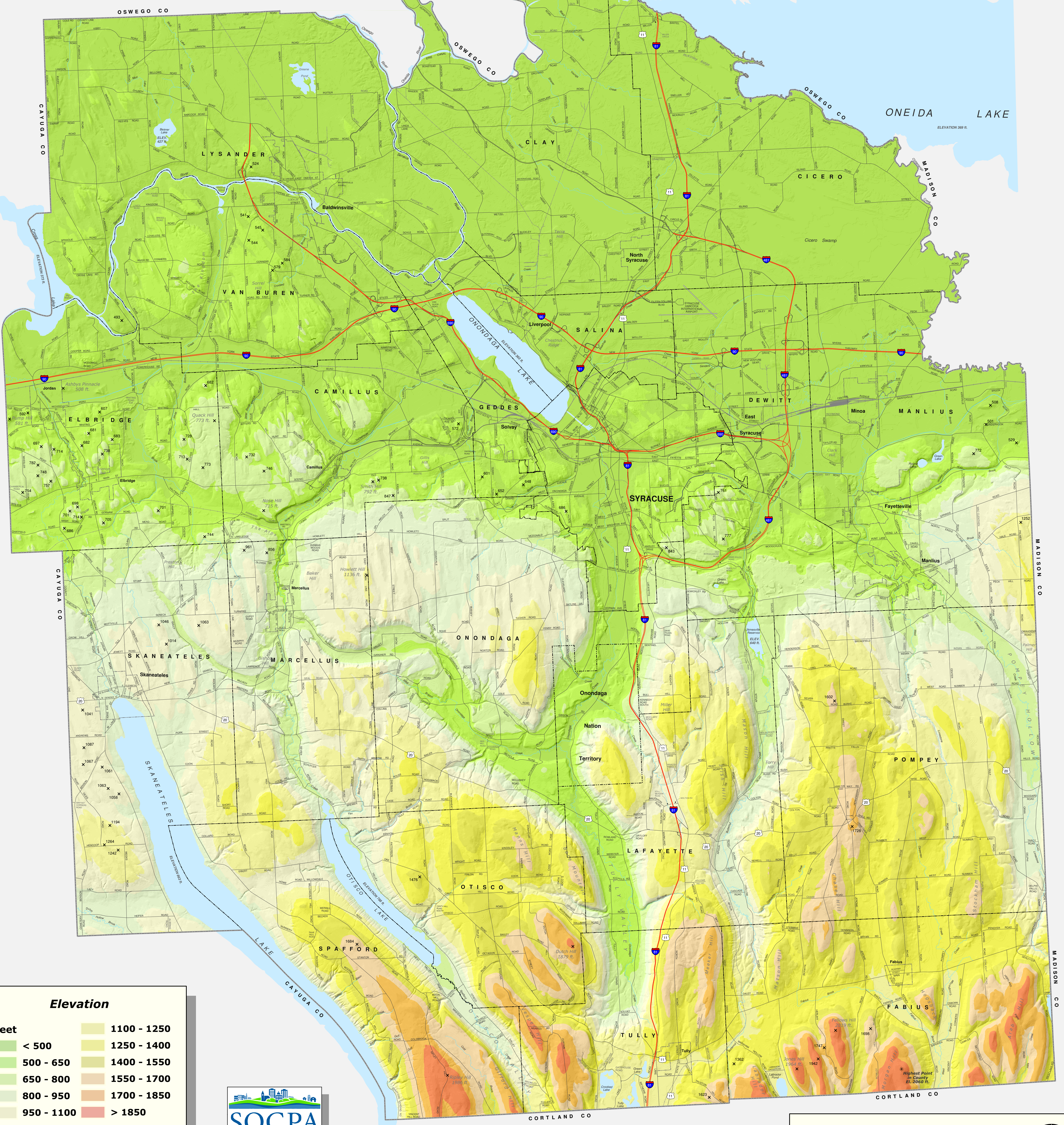


Topographic Map of ONONDAGA COUNTY NEW YORK

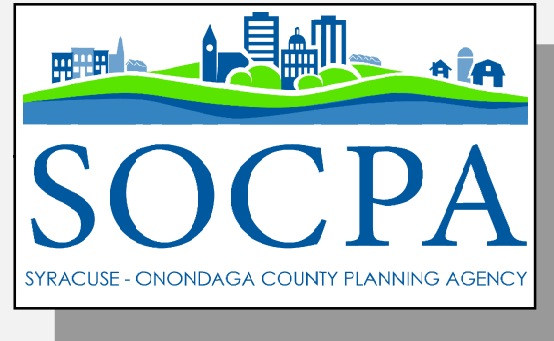


Elevation

Feet	1100 - 1250
< 500	1250 - 1400
500 - 650	1400 - 1550
650 - 800	1550 - 1700
800 - 950	1700 - 1850
950 - 1100	> 1850

x 1684 Spot Elevation in Feet

Note: Elevation data obtained from United States Geological Survey 10-meter Digital Elevation Models. Topographic feature names and elevations obtained from USGS Topographic 7.5 minute quadrangle maps.



1 0 1 2 3 4 Miles

1 0 1 2 3 4 5 Kilometers

1 INCH = 1 MILE